

TEHRAN SUMMIT

The Introduction of New Iran Petroleum Contracts – IPC

Tehran – ۲۰۱۵

Iran's ۱۴ E&P Blocks

By: Hossein Motamedi

**Head of Structural Geology Department
Exploration Directorate**

Exploration Blocks

Iran's ۱۴ E&P Blocks

۱-Outline

۲-Geological Characteristics,
Prospectivity & Available Data

Offshore Blocks

Onshore Blocks



ENER+

Outline

NIOC offers fourteen E&P blocks with almost ۷۱۰۰۰ Km^۲ area which enclose six geological basins.

The offered blocks are mixture of mature plays, high potential and new frontier basins.



Zagros & Persian Gulf

Zagros fold and thrust belt and its foreland basin (Persian Gulf) with proven multiple hydrocarbon plays is one of the world's most prolific oil and gas province.

Four onshore blocks have been offered in different sub-basins of the Zagros including Lurestan (two blocks), Dezful (one Block) and Fars (one Block).

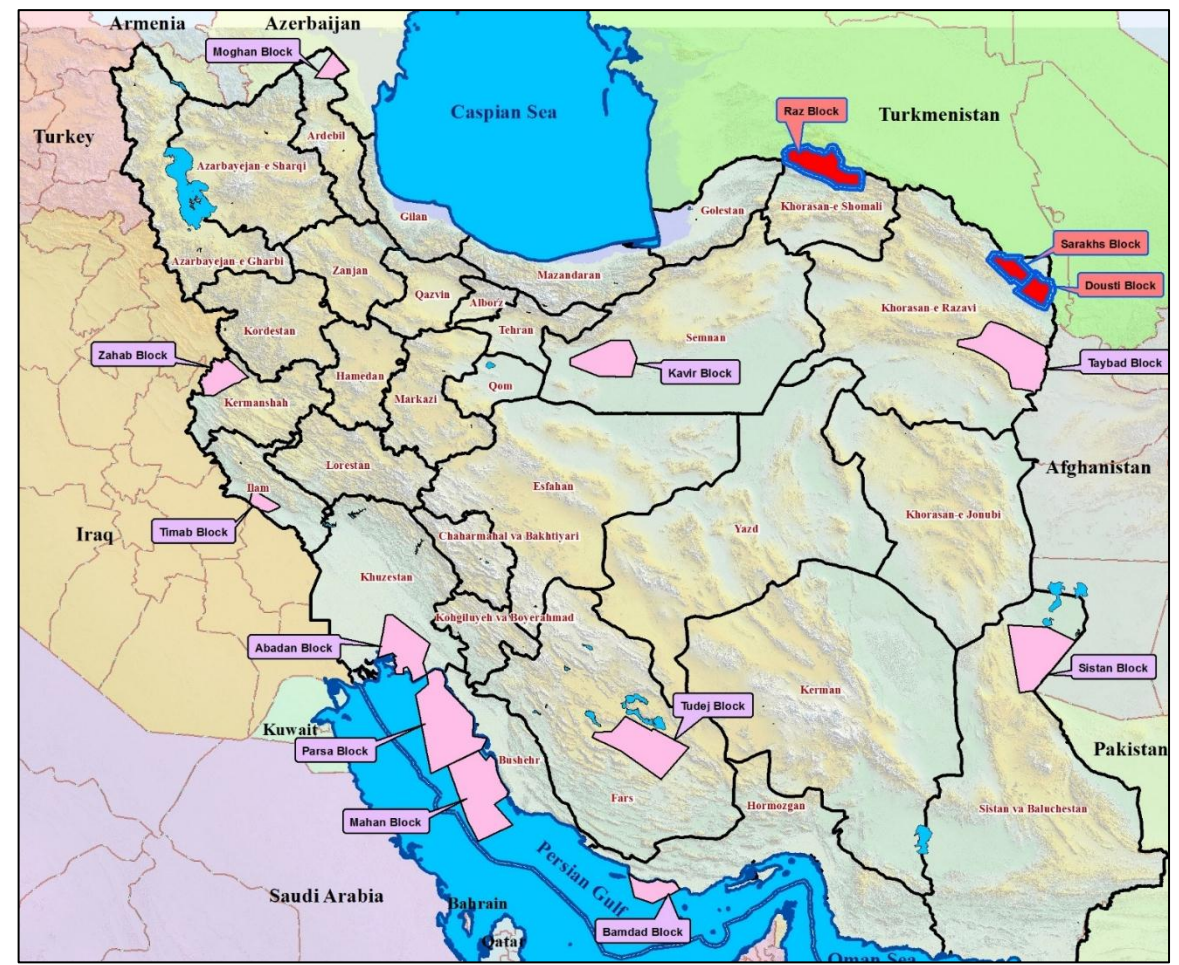
In offshore Persian Gulf, three blocks have been offered.



Kopet Dagh Basin

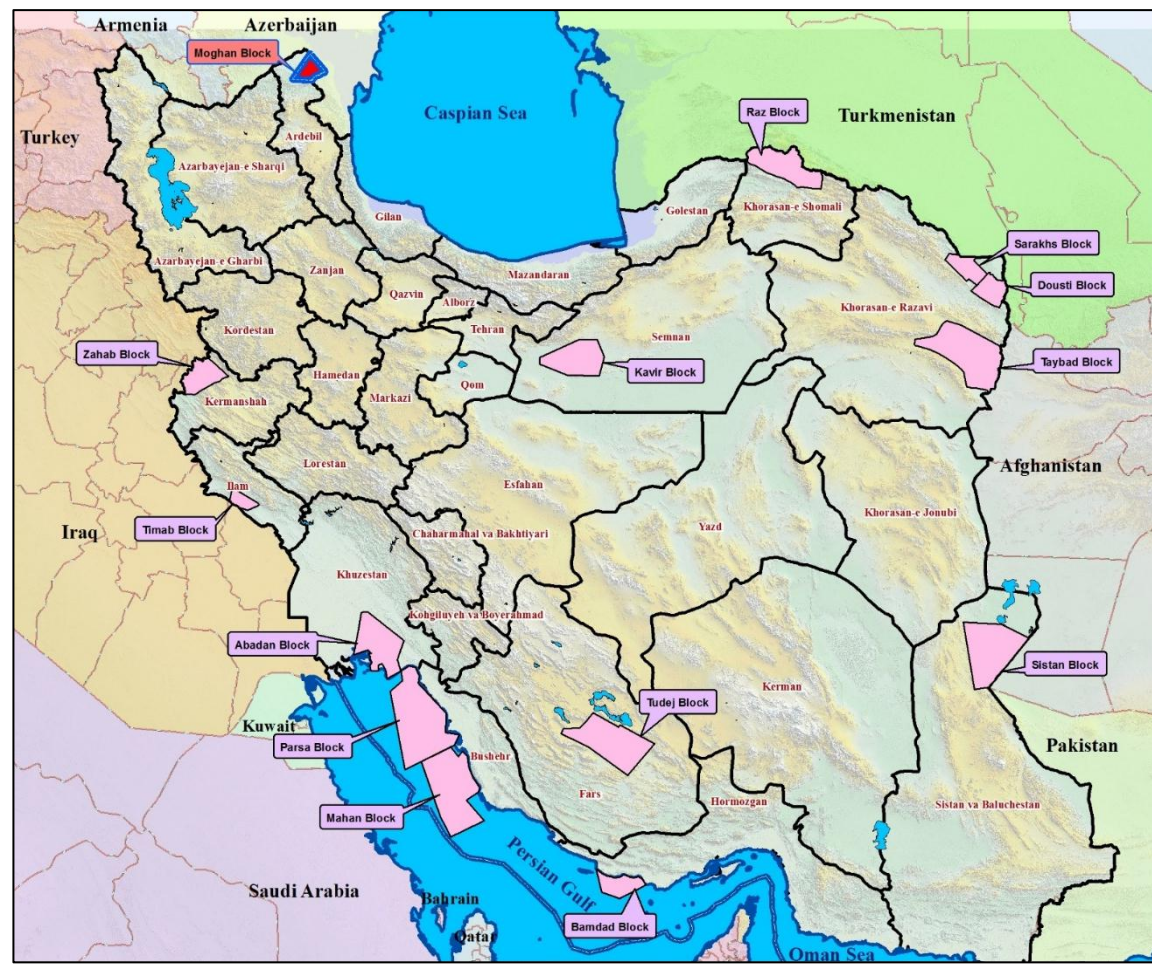
Kopet Dagh is an inverted sedimentary basin extended from east of Caspian to NE Iran and southern Turkmenistan. It is a gas prone geological province and hosts the giant Khangiran and Gonbadli gas fields in the Iranian side.

Three blocks have been offered in this basin.



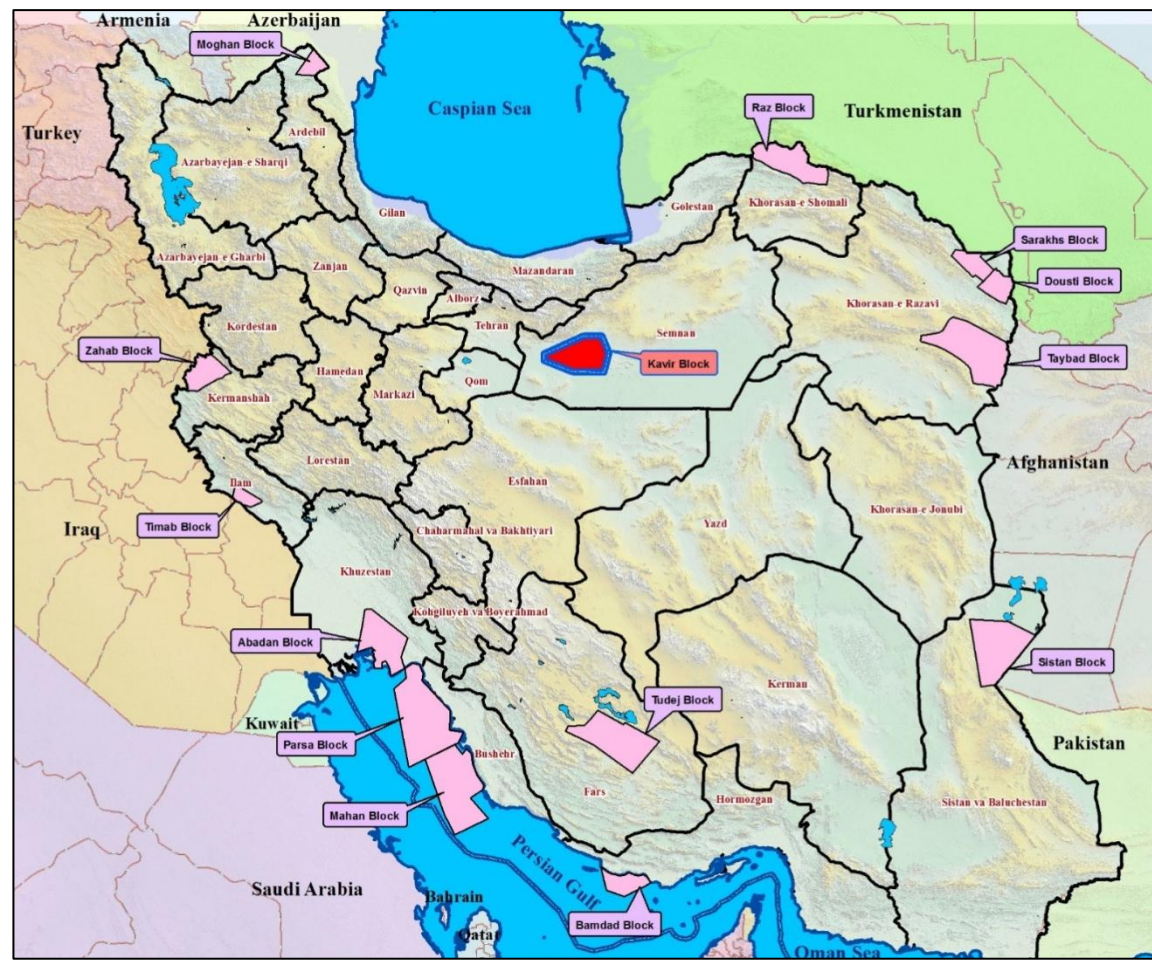
Moghan Basin

In Moghan area with proven hydrocarbon system and significant amount of oil discovery, one block has been offered.



Central Iran Basin

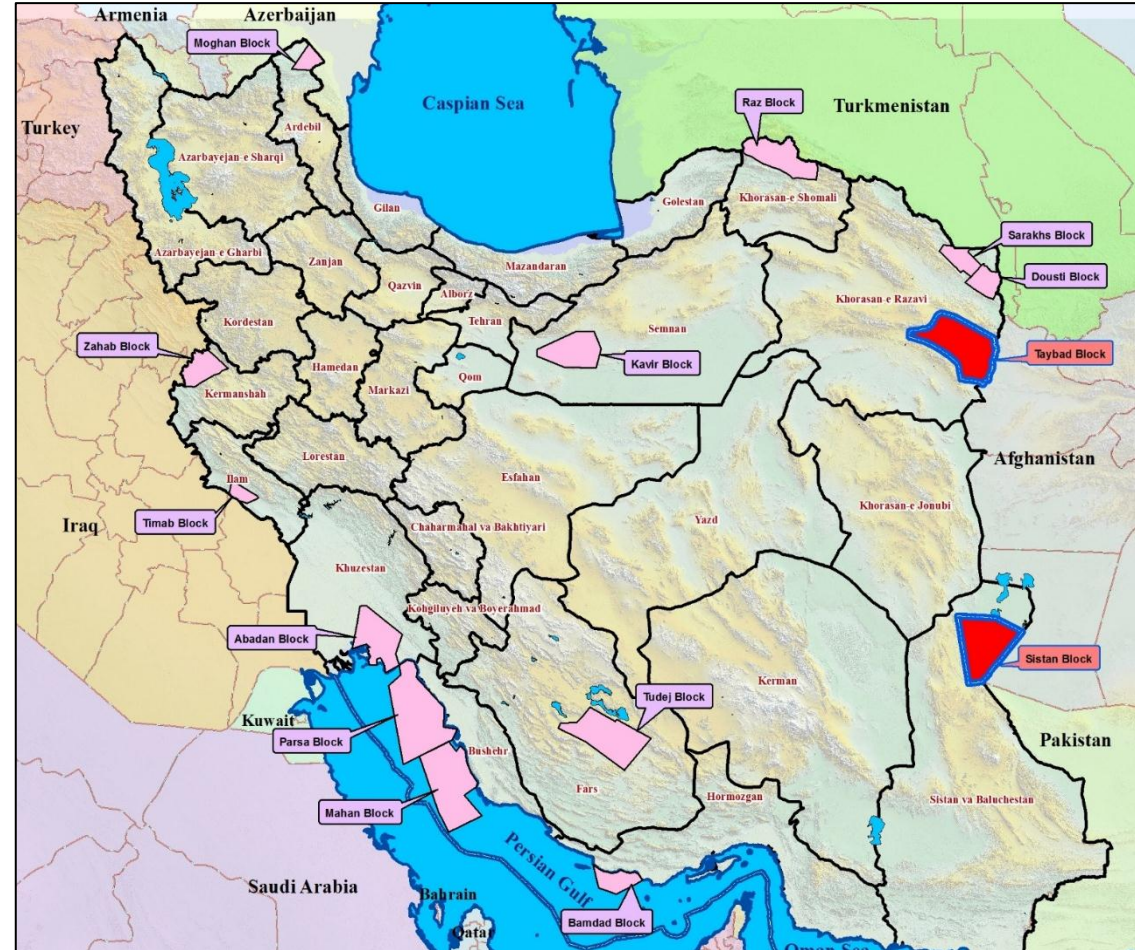
In Central Iran basin, one block has been offered in a high potential part of the region.



Frontier Basins

Two blocks in new frontier basins have been offered to persuade investors to the regions with a good potential.

The frontier blocks include Taybad and Sistan onshore blocks which are situated in Taybad and Esatern Iran basins respectively.



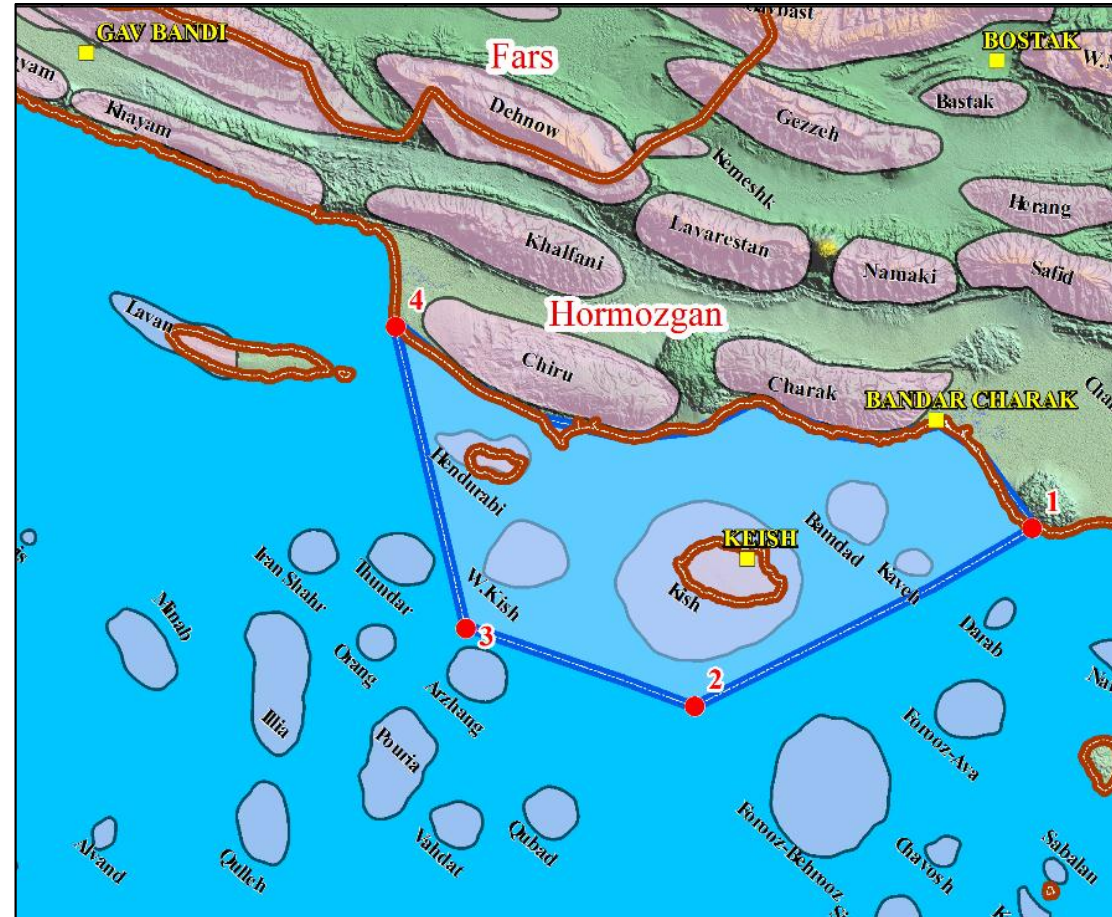
۱۴ E&P Blocks, Geological Characteristic, Prospectivity & Available Data

OFFSHORE BLOCKS

Offshore Blocks Persian Gulf Basin

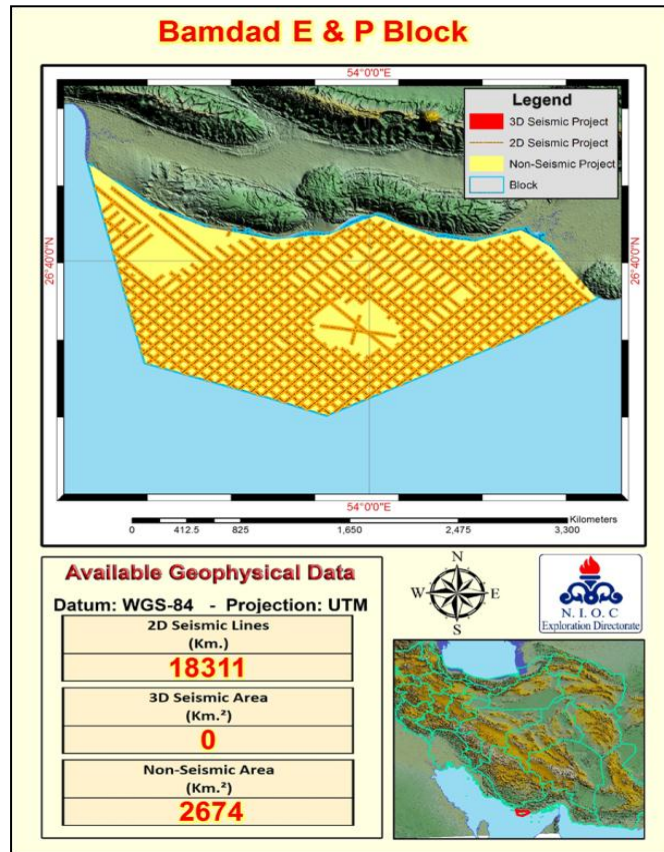
1-Bamdad Block

Kish giant gas field is situated within the block area.



Offshore Blocks Persian Gulf Basin

۱-Bamdad Block



BAMDAD BLOCK						
No.	Targets Structures	Oligo-Miocene	Upper Cretaceous	Lower Cretaceous	Jurassic	Permo Triassic
		Asmari	Bangestan	U. Khami	L. Khami	Dehram
۱	Bamdad	x	x	x	x	P
۲	West Kish	x	x	x	x	P
۳	Hendurabi	x	x	x	x	P
۴	Kaveh	x	x	x	x	P
۵	Kish (D)					

x	Not Prospect
	Drilled Dry
	Discovered
P	Prospect

(D): Drilled Structure



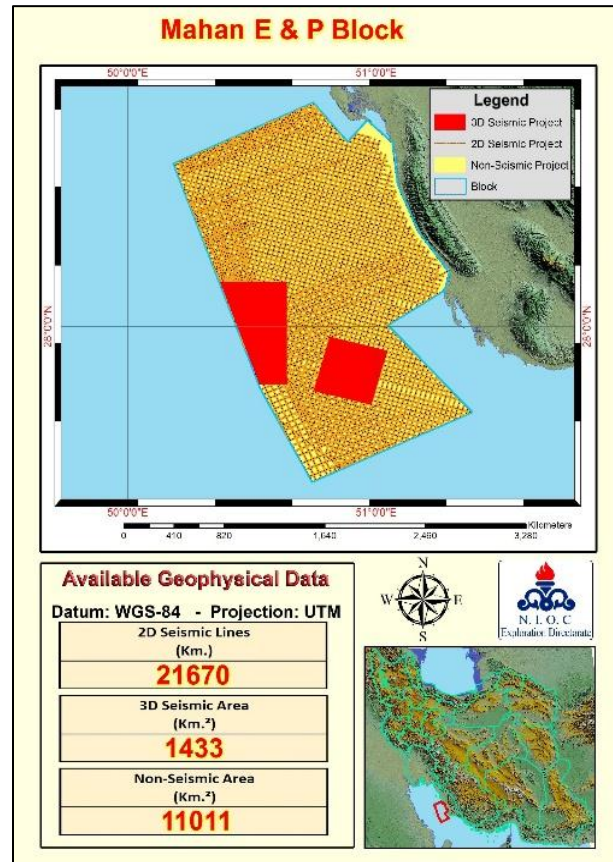
Offshore Blocks Persian Gulf Basin

۲-Mahan Block

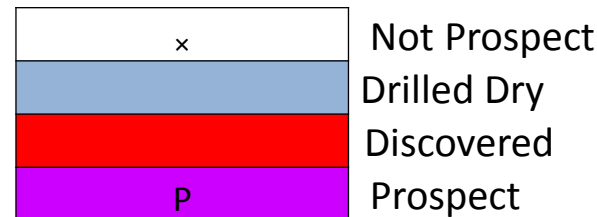


Offshore Blocks Persian Gulf Basin

۲-Mahan Block



Mahan Block						
No.	Targets Structures	Oligo-Miocene	U. Cretaceous	L.Cretaceous	Jurassic	Permo Triassic
		Asmari	Bangestan	U.Khami	L. Khami	Dehram
۱	Binaloud C					P
۲	Farzad C				P	P
۳	Saravan				x	x
۴	Iranmehr					x
۵	L-F (S.T.)	x	x	P	x	x
۶	L-C (S.T.)	x	P	x	x	x



(D): Drilled Structure



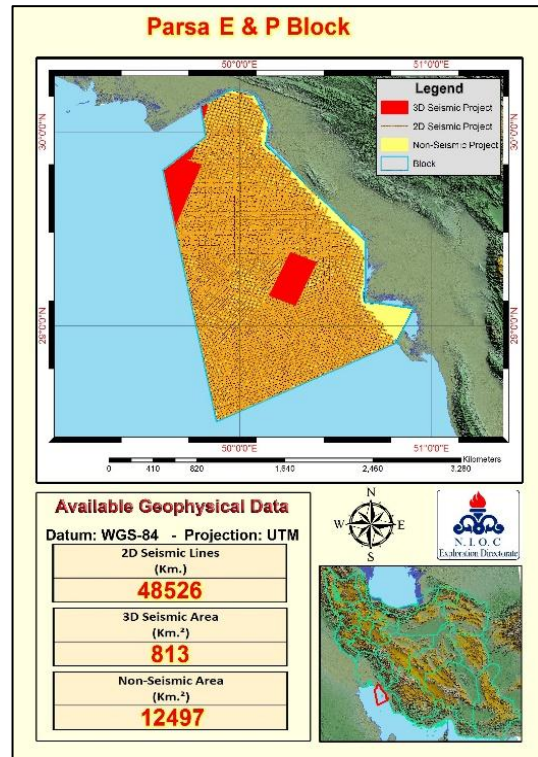
Offshore Blocks Persian Gulf Basin

۲-Parsa Block



Offshore Blocks Persian Gulf Basin

۳-Parsa Block



		Parsa Block				
No.	Targets Structures	Oligo-Miocene	Upper Cretaceous	Lower Cretaceous	Jurassic	Permo Triassic
		Asmari	Bangestan	Upper Khami	Lower Khami	Dehram
۱	Dorood (D)				x	x
۲	Binak (D)				x	x
۳	Taban				x	x
۴	Salar	x		x	x	x
۵	Javan (D)			N.C	x	x
۶	Bahman (D)			N.C	x	x
۷	Hamman (D)			N.C	x	x
۸	Shush	x	P	x	x	x
۹	Negar	P	x	x	x	x
۱۰	Binak Nose		x	x	x	x
۱۱	Navid	P	x	x	x	x
۱۲	Babak	x	P	x	x	x
۱۳	Nasim	P	x	x	x	x
۱۴	Parsa	x	P	x	x	x
۱۵	Bandar-e Daylam		x	x	x	x
۱۶	Bushehr					x
۱۷	L-D (S.T.)	x	P	x	x	x
۱۸	L-A (S.T.)	x	P	x	x	x
۱۹	L-B (S.T.)	x	P	x	x	x
۲۰	L-۲۳	x	P	P	x	x
۲۲	L-۲۴ (S.T.)	x	x	x	P	x

x
P

Not Prospect
Drilled Dry
Discovered
Prospect

(D): Drilled Structure
N.C.: Non commercial
S.T.: Stratigraphic Trap

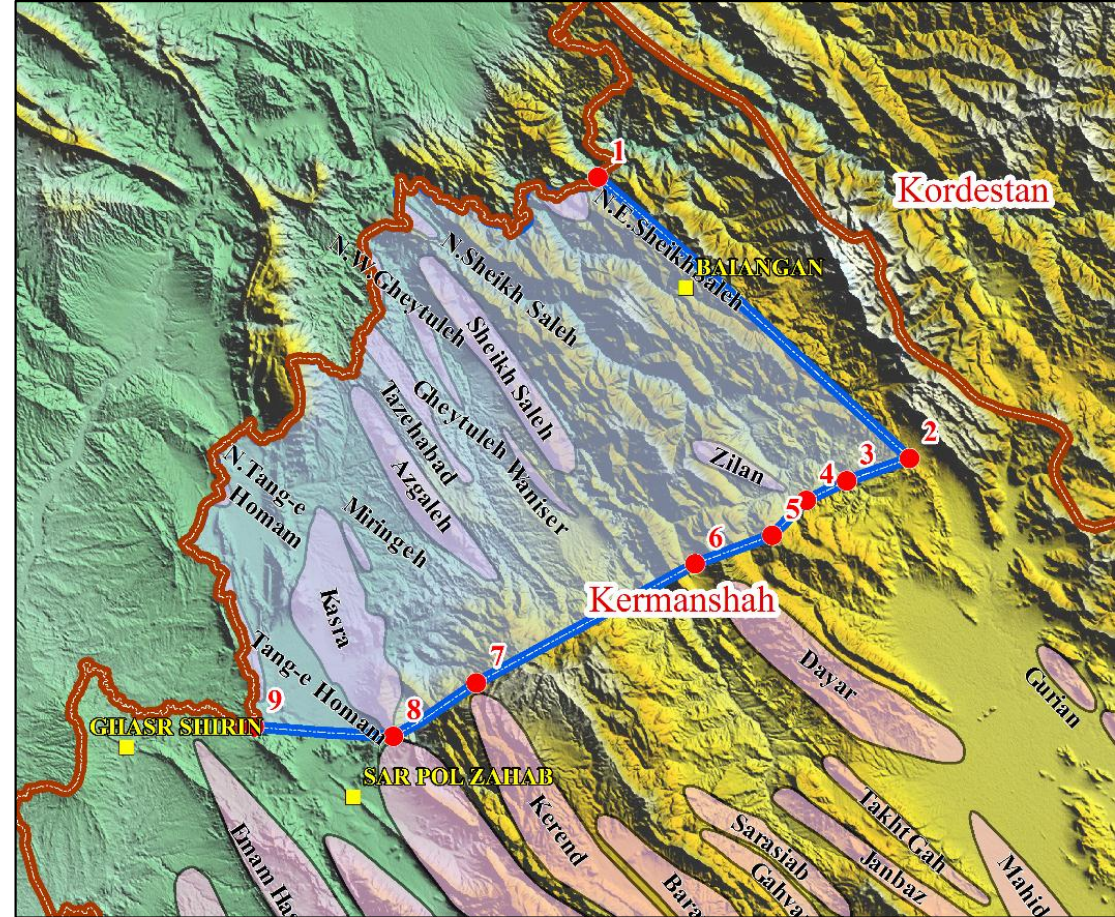
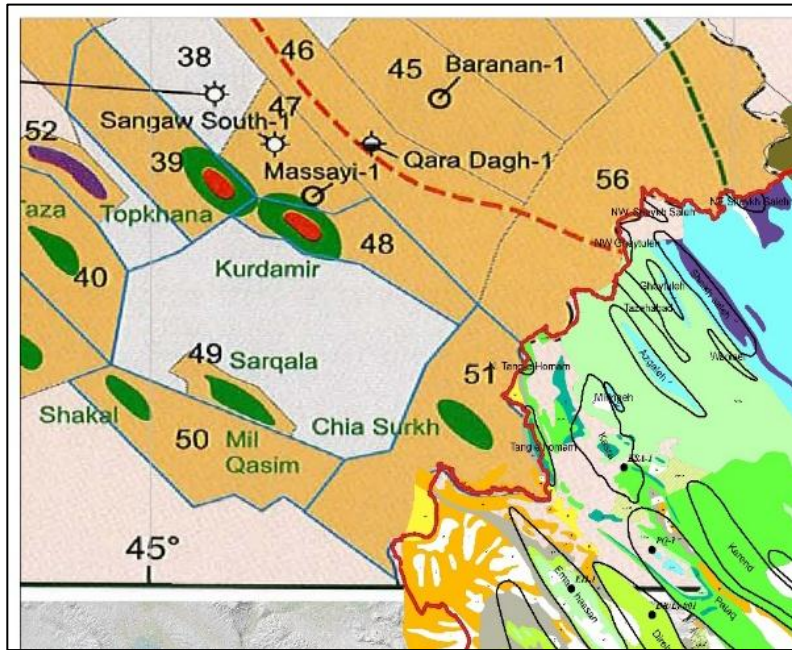


ONSHORE BLOCKS

ZAGROS BASIN

Zagros Lurestan Sub-Basin

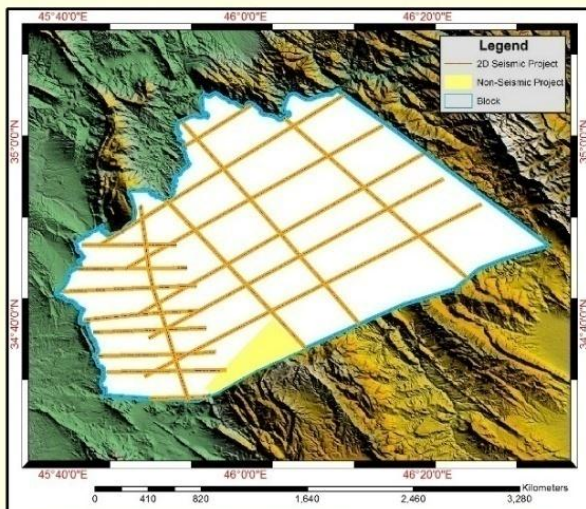
1-Zahab Block



Zagros Lurestan Sub-Basin

1-Zahab Block

Zahab E & P Block



Available Geophysical Data

Datum: WGS-84 - Projection: UTM

2D Seismic Lines (Km.)	618
3D Seismic Area (Km. ²)	0
Non-Seismic Area (Km. ²)	84



Zahab Block						
No.	Targets Structures	Oligo-Miocene	Upper Cretaceous	Lower Cretaceous	Jurassic	Permo Triassic
		Asmari	Bangestan	Upper Khami	Lower Khami	Dehram
۱	Sheikh Saleh North East	x	x	x	x	x
۲	Sheikh Saleh North West	x	x	x	p	x
۳	Sheikh Saleh	x	x	x	x	x
۴	Zilan	x	x	x	p	x
۵	Gheytureh North West	x	x	x	p	x
۶	Gheytureh	x	x	x	p	p
۷	Tazaeh Abad	x	x	x	p	x
۸	Waniser	x	x	x	p	x
۹	Azgaleh	x	x	x	p	x
۱۰	Miringeh	x	x	x	p	p
۱۱	Kasra(D)	x				p
۱۲	Tange homam North	x	x	x	x	x
۱۳	Tang-e Homam	x	x	x	x	x

x
P

Not Prospect

Drilled Dry

Discovered

Prospect

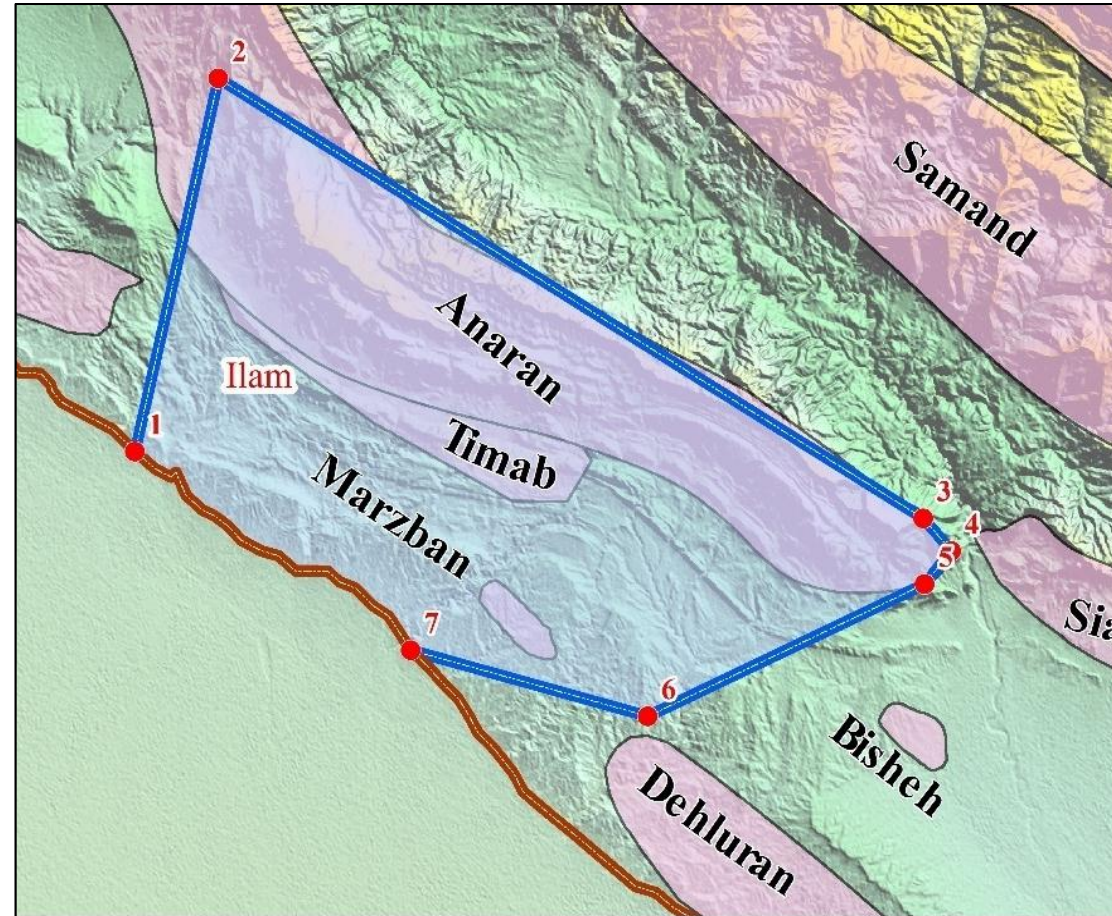
(D): Drilled Structure



Zagros Lurestan Sub-Basin

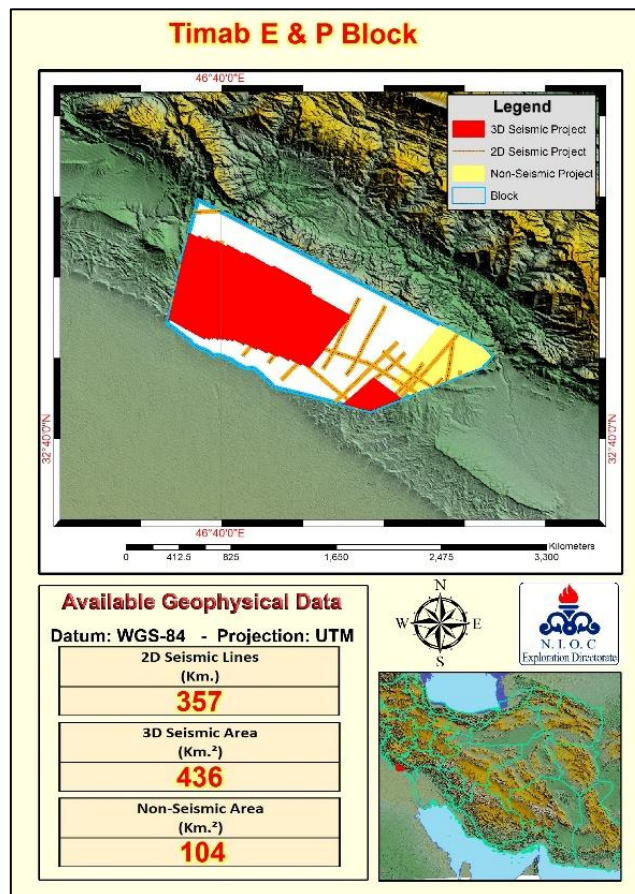
۲-Timab Block

Block is situated adjacent to Dehluran and Changuleh oil fields.



Zagros Lurestan Sub-Basin

۲-Timab Block



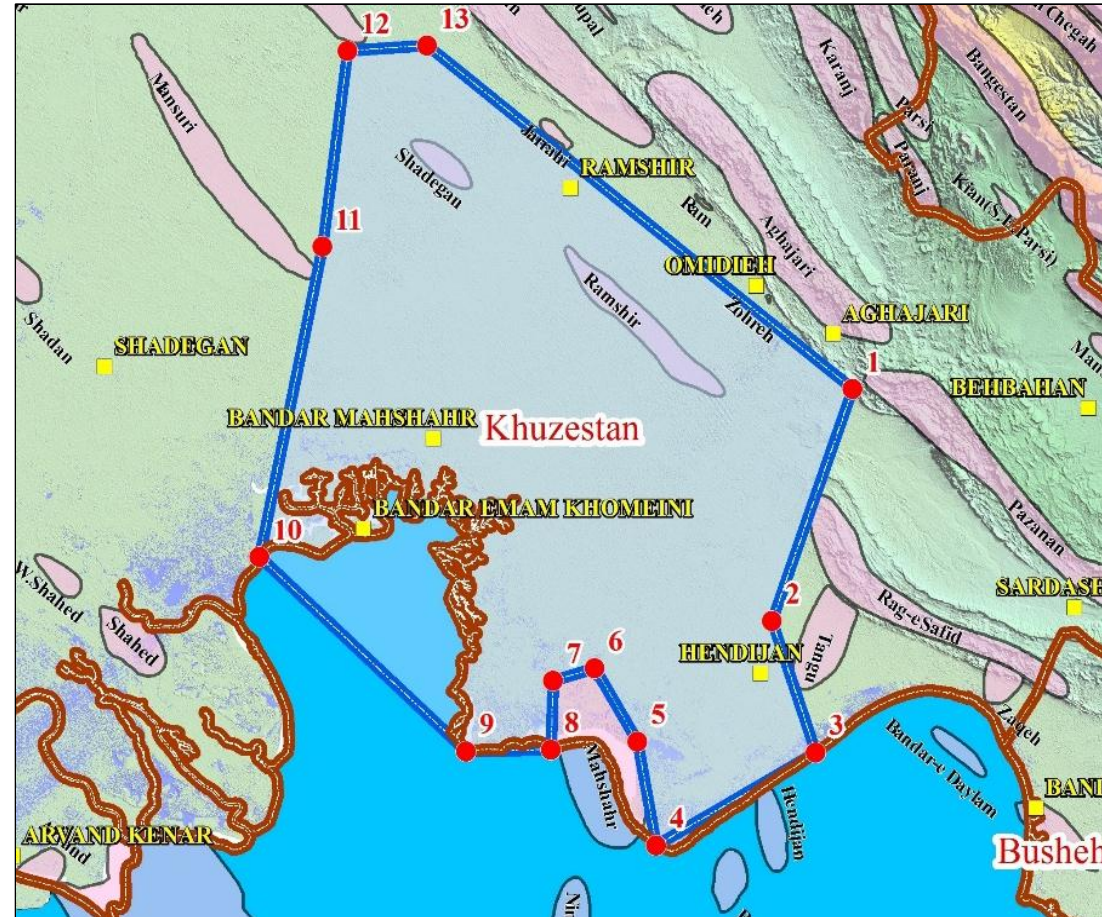
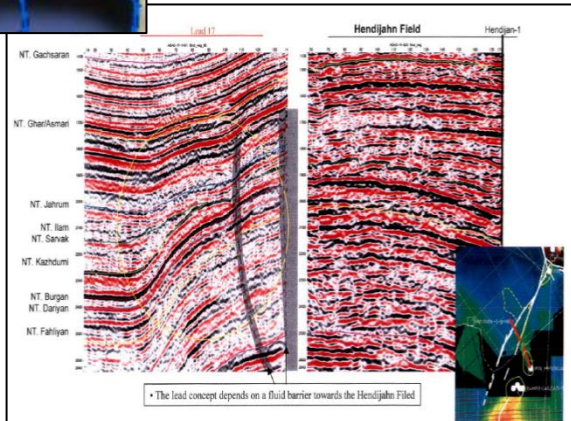
Timab Block						
No.	Targets Structures	Oligo-Miocene	U. Cretaceous	L. Cretaceous	Jurassic	Permo - Triassic
		Asmari	Bangestan	U.Khami	L.Khami	Dehram
۱	Timab	P	P	x	x	x
۲	Mrazban	P	P	x	x	x

x	Not Prospect
	Drilled Dry
	Discovered
P	Prospect



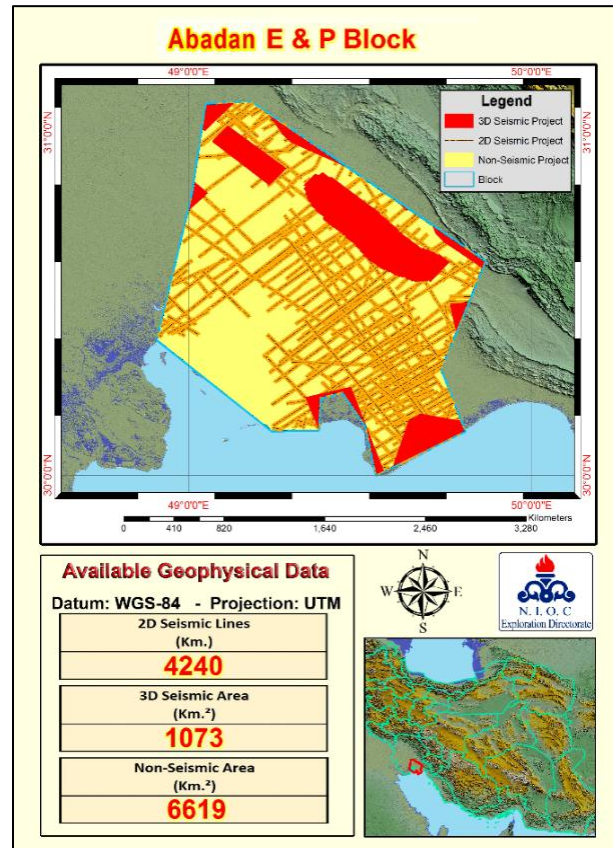
Zagros Dezful Sub-Basin

۳-Abadan Block



Zagros Dezful Sub-Basin

۳-Abadan Block



		Abadan Block				
No.	Targets Structures	Oligo-Miocene	Upper Cretaceous	Lower Cretaceous	Jurassic	Permo Triassic
		Asmari	Bangestan	Upper Khami	Lower Khami	Dehram
۱	Ramshir(D)			P	x	x
۲	Shadegan(D)			P	x	x
۳	Mahshar(D)				P	x
۴	L۱۶	STRATIGRAPHIC TRAP				
۵	L۱۷	STRATIGRAPHIC TRAP				
۶	L۱۸	STRATIGRAPHIC TRAP				
۷	L۲۰	STRATIGRAPHIC TRAP				

x	Not Prospect
	Drilled Dry
	Discovered
P	Prospect

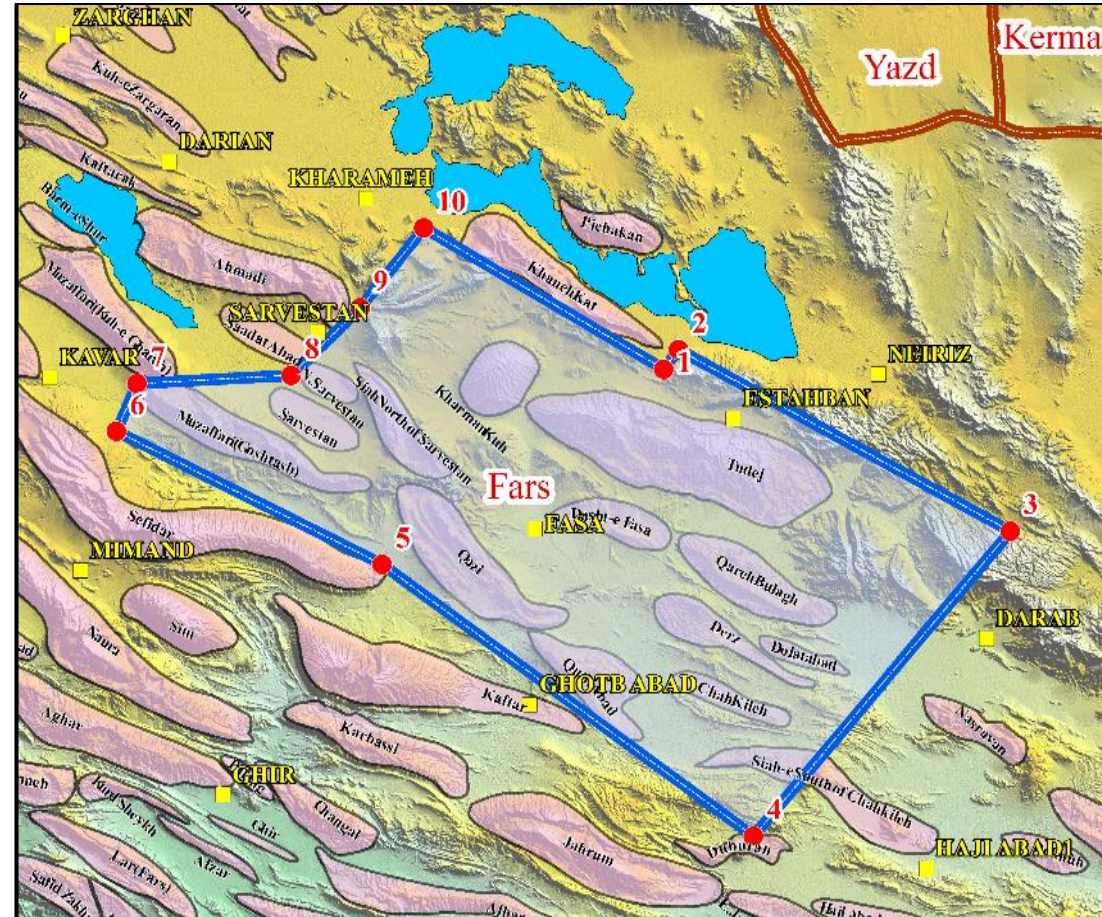
(D): Drilled Structure



Zagros Fars Sub-Basin

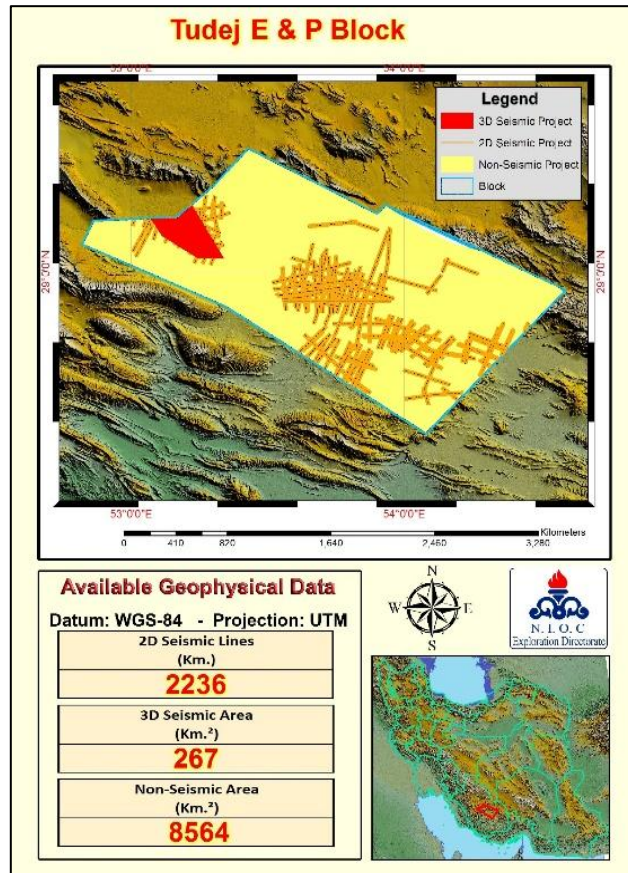
۴-Tudej Block

Sarvestan oil field is located within the block area.



Zagros Fars Sub-Basin

۴-Tudej Block



Tudej Block						
No.	Structures	Targets	Upper Cretaceous	Lower Cretaceous	Jurassic	Permo Triassic
		Asmari	Bangestan	Upper Khami	Lower Khami	Dehram
۱	Qutb Abad(D)				x	P
۲	Siah-e South of Chahkilleh	x	x	x	x	P
۳	Muzaffari(Goshtasb)	x	x	x	x	P
۴	Qareh Bulagh	x	x	x	x	x
۵	Derz	x	P	P	x	P
۶	Chah Kileh	x	x	x	x	x
۷	Toudej(D)	x		x	x	P
۸	Kharman Kuh	x	x	P	x	x
۹	Siah-e North of Sarvestan	x	x	x	x	x
۱۰	Dasht-e Fasa	x	P	P	x	P
۱۱	Qazi	x	x	x	x	x
۱۲	Sarvestan(D)	x				P
۱۳	North Sarvestan	x	P	x	x	P

x
P

Not Prospect
Drilled Dry
Discovered
Prospect

(D): Drilled Structure

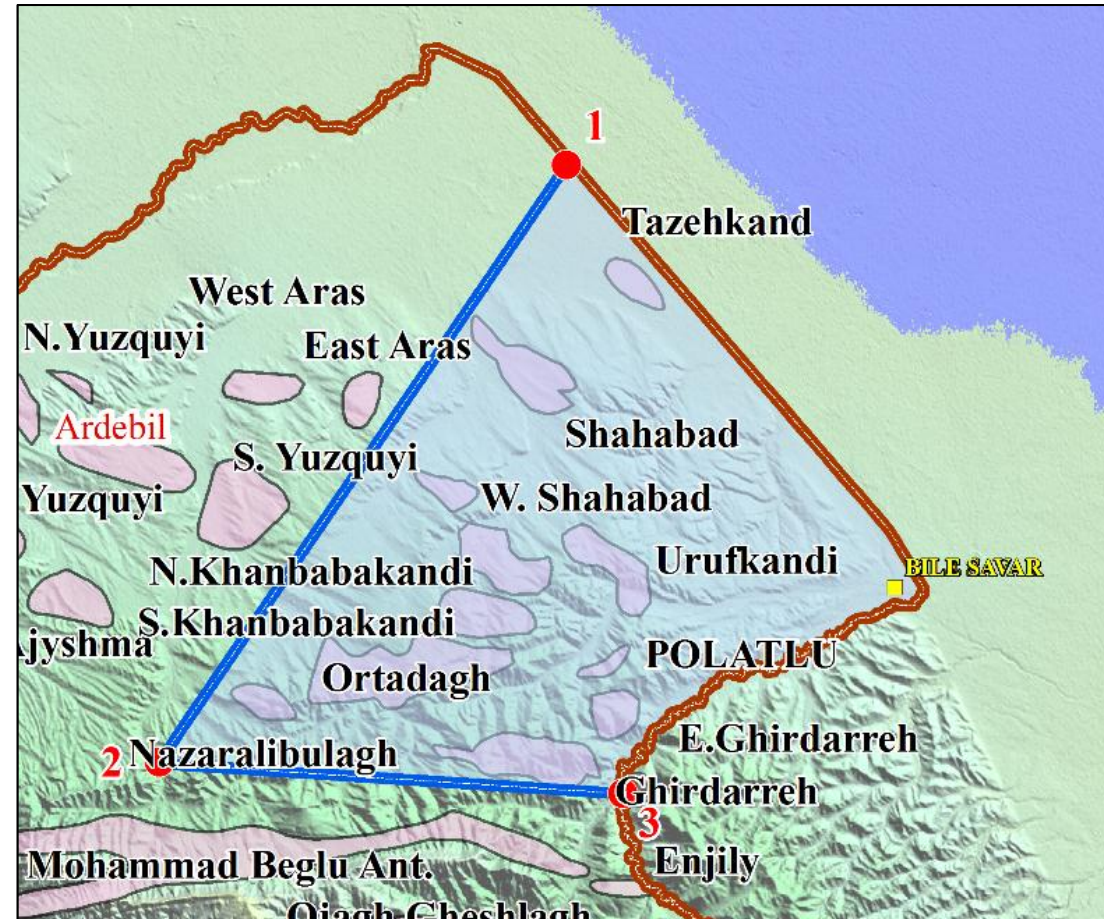


MOGHAN BASIN

Moghan

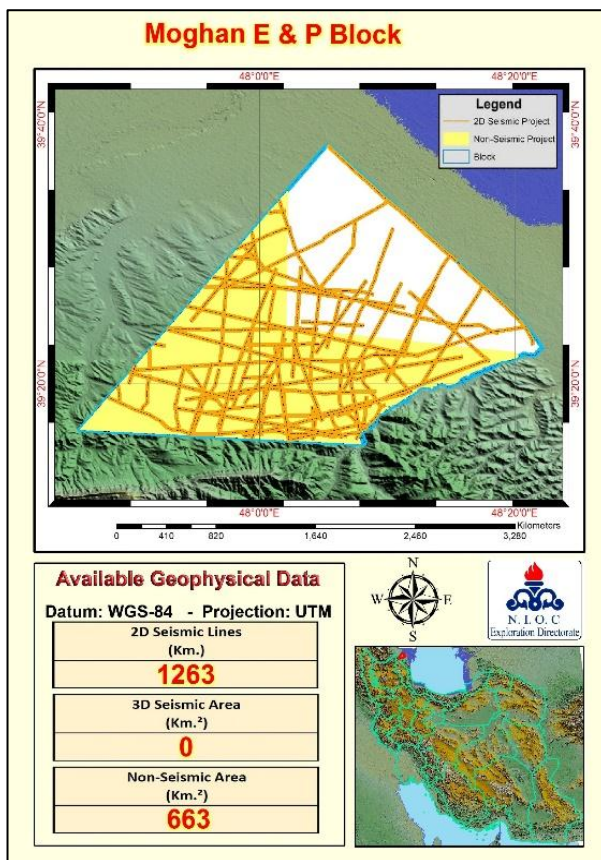
1-Moghan Block

Ghirdarreh and Ortadagh oil discoveries are situated within the block area.

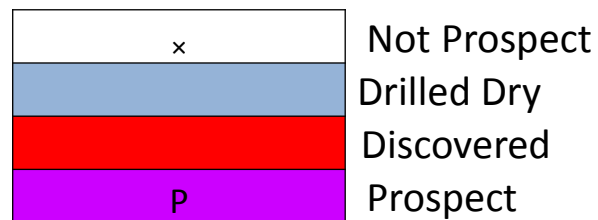


Moghan

1-Moghan Block



Moghan Block				
No.	Structures	Targets		Cretaceous
		Oligo-Miocene Zivar	Oligo -Miocene Ojagh Qeshlagh	
۱	Khanbaba Kandi North	P	P	×
۲	Khanbaba Kandi South	P	P	×
۳	Ghir Darreh (D)			×
۴	Ortadagh (D)			×
۵	Tazeh Kandy(D)			×
۶	Morad Lu	P	P	×
۷	Nazarali Bulagh	P	P	×
۸	Polatlu	P	P	×
۹	Shah Abad-e Moghan West	P	P	×
۱۰	Urufkandi	P	P	P



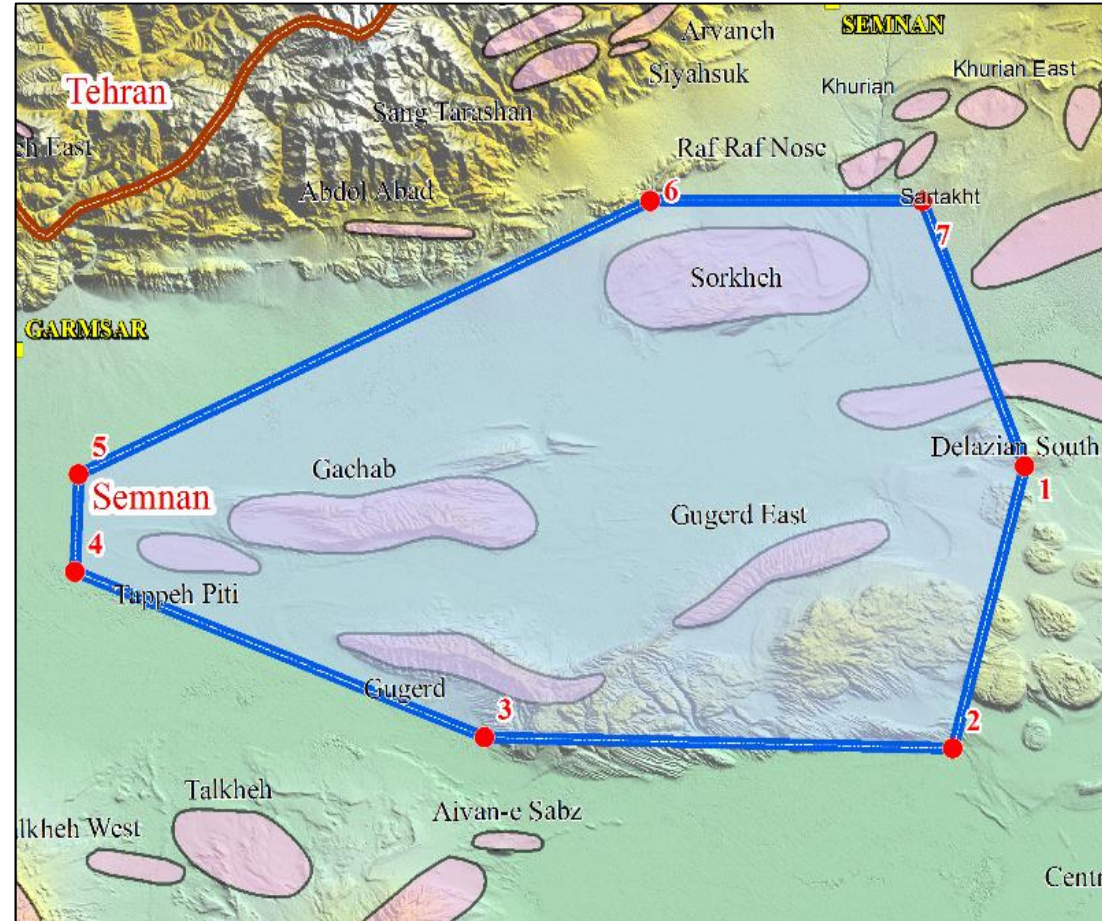
(D): Drilled Structure



CENTRAL IRAN BASIN

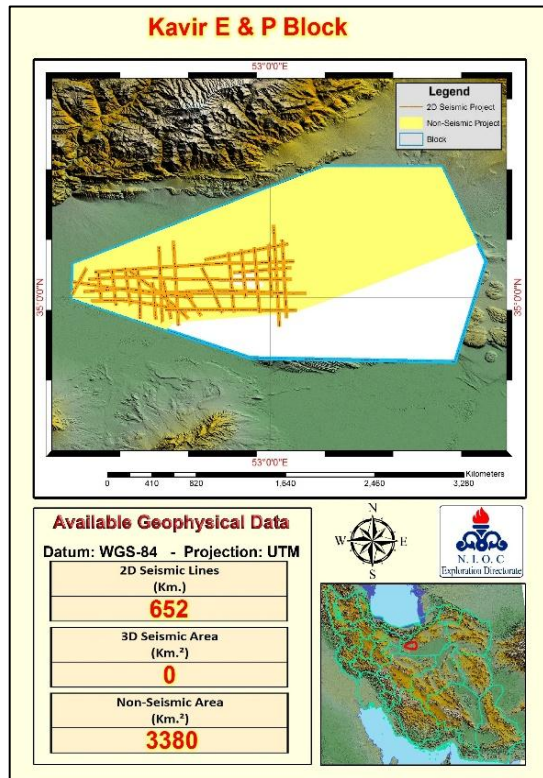
Central Iran

1-Kavir Block



Central Iran

۲-Kavir Block



Kavir Block		
No.	Structures	Oligo-Miocene
		Qom
۱	S. DELAZIAN	P
۲	E. KUH -E- GUGERD	P
۳	KUH -E- GACHAB	P
۴	TAPPEH PITI	P
۵	Sorkkeh	

x	Not Prospect
	Drilled Dry
	Discovered
P	Prospect

(D): Drilled Structure

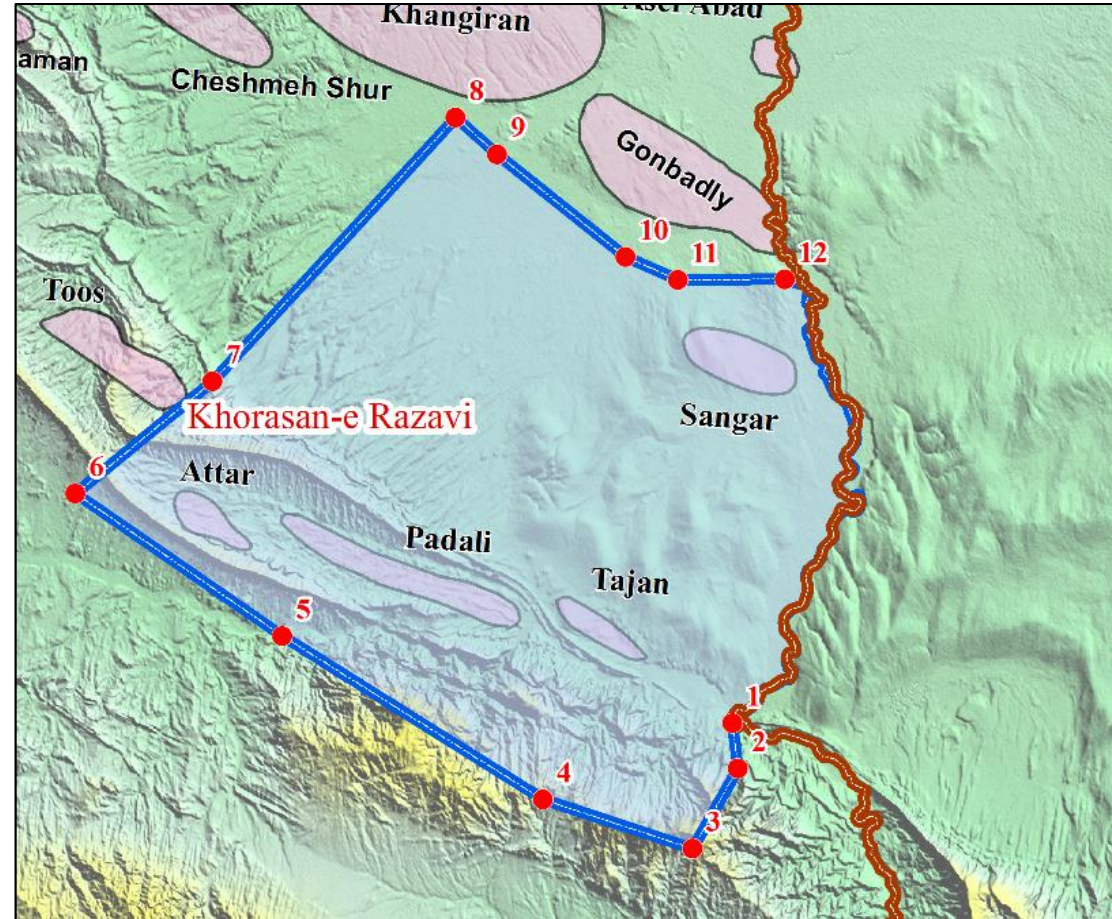


KOPET DAGH BASIN

Kopet Dagh

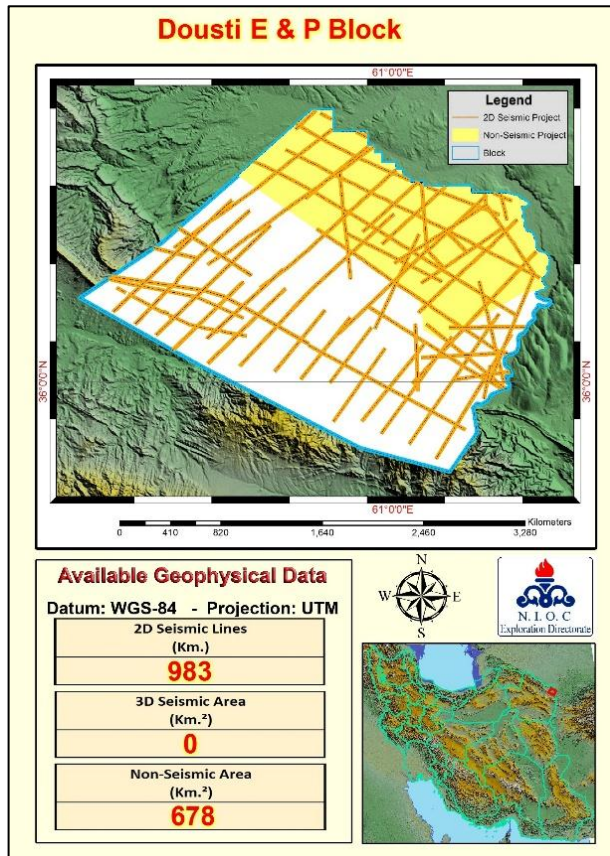
1-Dousti Block

Block is situated adjacent to Gonbadli gas field.



Kopet Dagh

۱-Dousti Block



		Dusti Block			
No.	Targets Structures	Lower Cretaceous	Lower Cretaceous	Upper Jurassic	Middle Jurassic
		Tirgan	Shurijeh	Mozduran	Kashaf Rud
۱	Attar(D)				
۲	Sangar(D)				
۳	Padali	x	p	p	p
۴	Tajan	x	x	x	x

x	Not Prospect
	Drilled Dry
	Discovered
P	Prospect

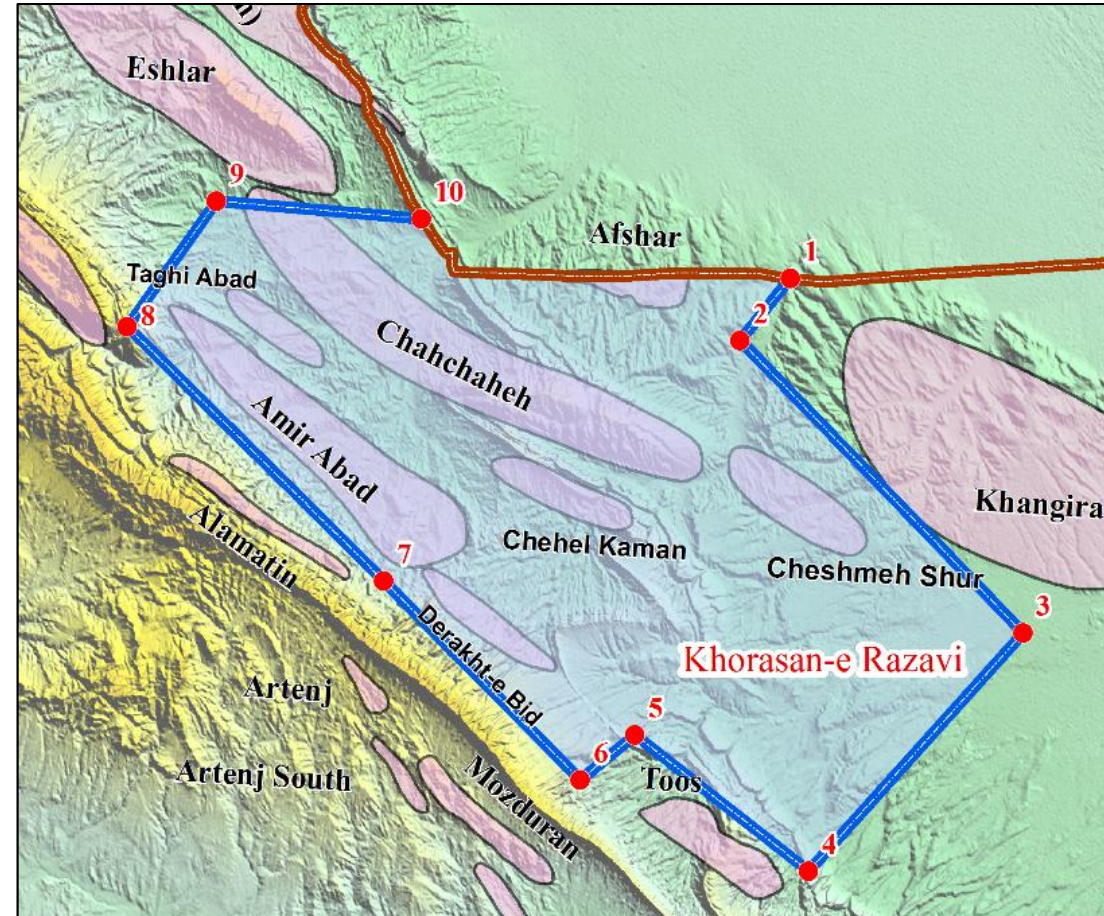
(D): Drilled Structure



Kopet Dagh

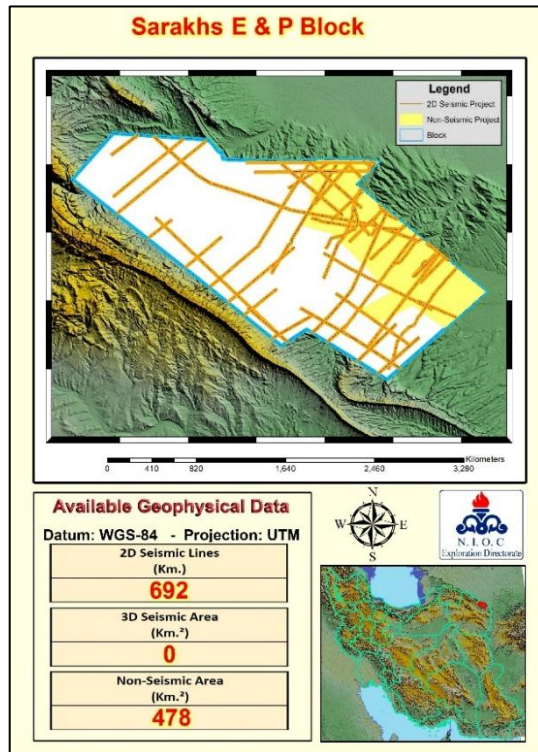
۲-Sarakhs Block

Block is situated adjacent to Khangiran and Toos gas fields.



Kopet Dagh

۲-Sarakhs Block



Sarakhs Block					
No.	Targets Structures	Lower Cretaceous	Lower Cretaceous	Upper Jurassic	Middle Jurassic
		Tirgan	Shurijeh	Mozduran	Kashaf Rud
۱	Chehel Kaman	x	x	x	x
۲	Amir Abad(D)	x			
۳	Afshar(D)	x			P
۴	Derakht-e Bid	x	x	x	x
۵	Taghi Abad	x	x	x	x
۶	Chahchaheh(D)	x			P
۷	Cheshmeh Shur	x	P	P	P

x	Not Prospect
	Drilled Dry
	Discovered
P	Prospect

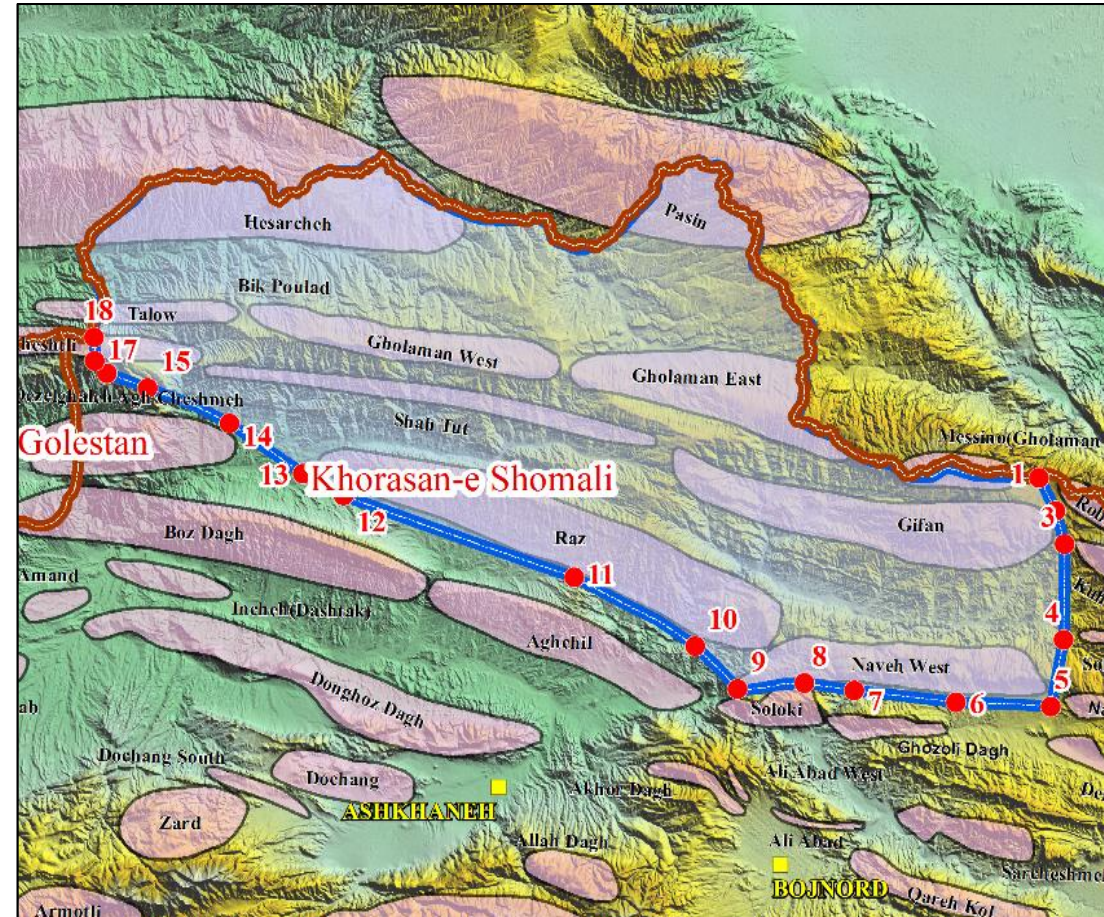
(D): Drilled Structure



Kopet Dagh

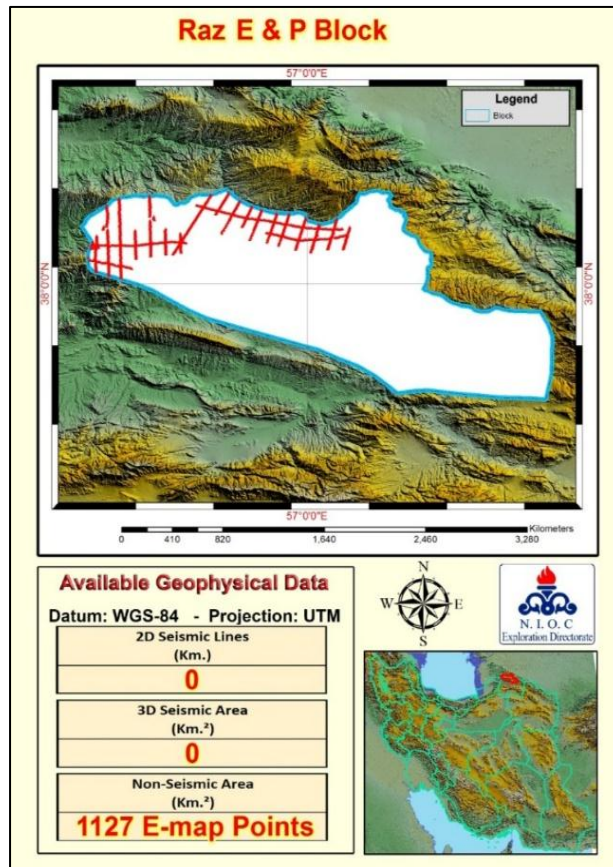
۳-Raz Block

Raz block is located in western part of Kopet Dagh.



Kopet Dagh

۲-Raz Block



Raz Block			
No.	Targets Structures	Lower Cretaceous	Middle Jurassic
		Tirgan	Kasshafrud/Shemshak
۱	Shatut	P	P
۲	Gifan	x	P
۳	Kheshtli	P	x
۴	Naveh West	x	x
۵	Talow	P	x
۶	Raz	x	P
۷	Gholaman West	P	P
۸	Gholaman East	x	x
۹	Hesarcheh	P	x
۱۰	Pasin	P	x

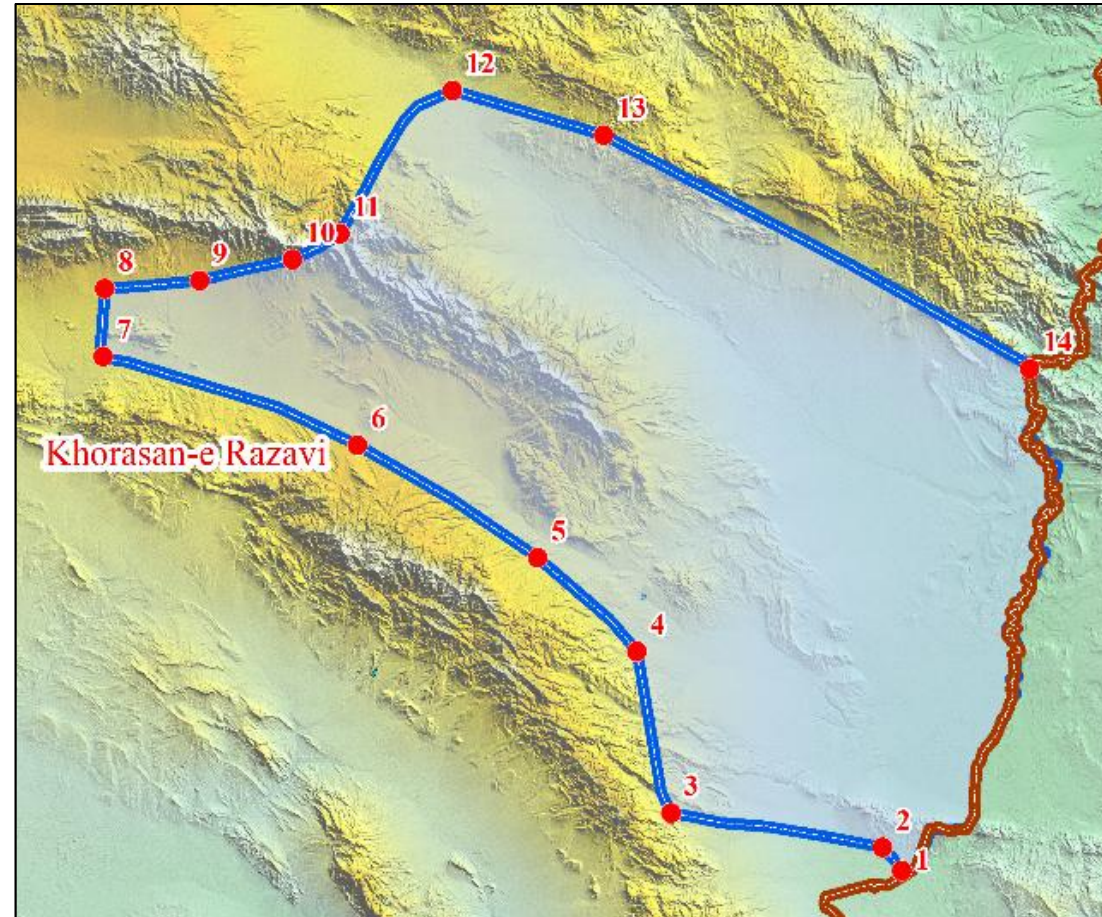
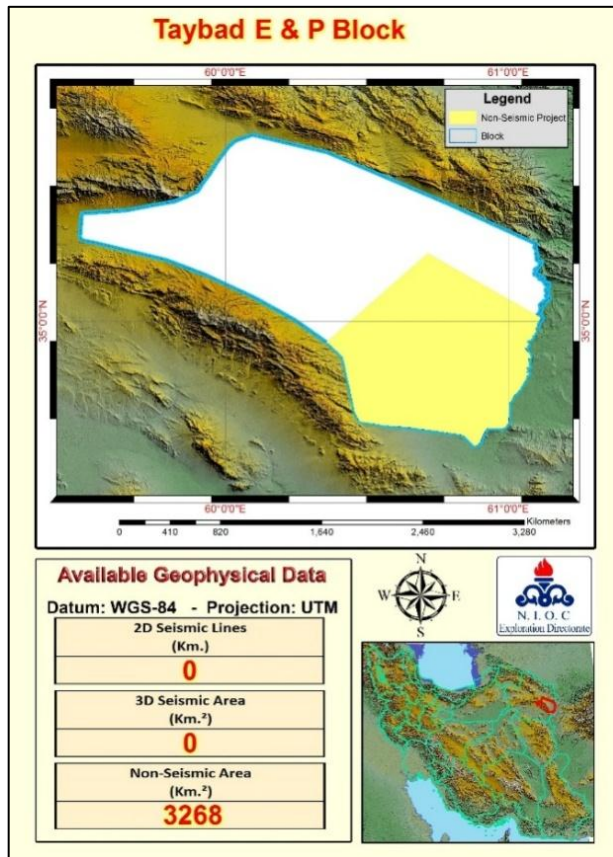
x	Not Prospect
Blue box	Drilled Dry
Red box	Discovered
P	Prospect



FRONTIER BASINS

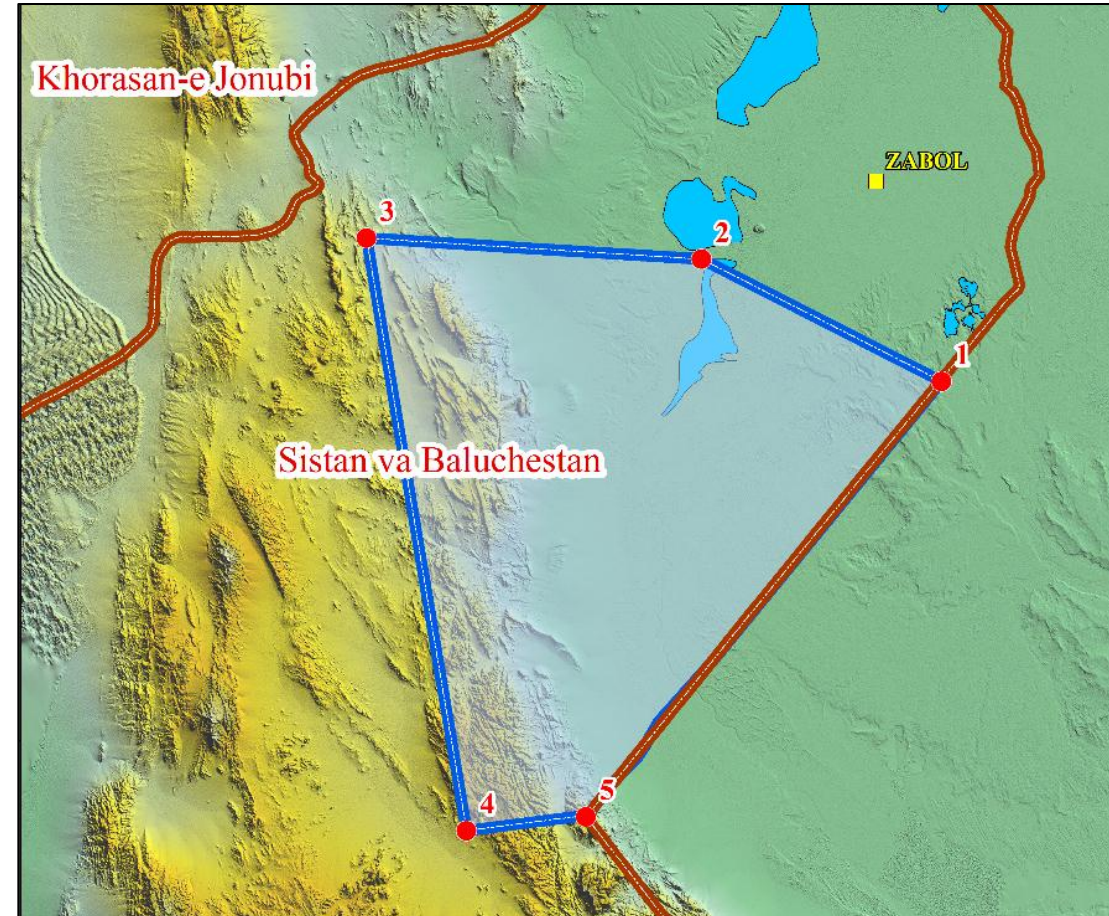
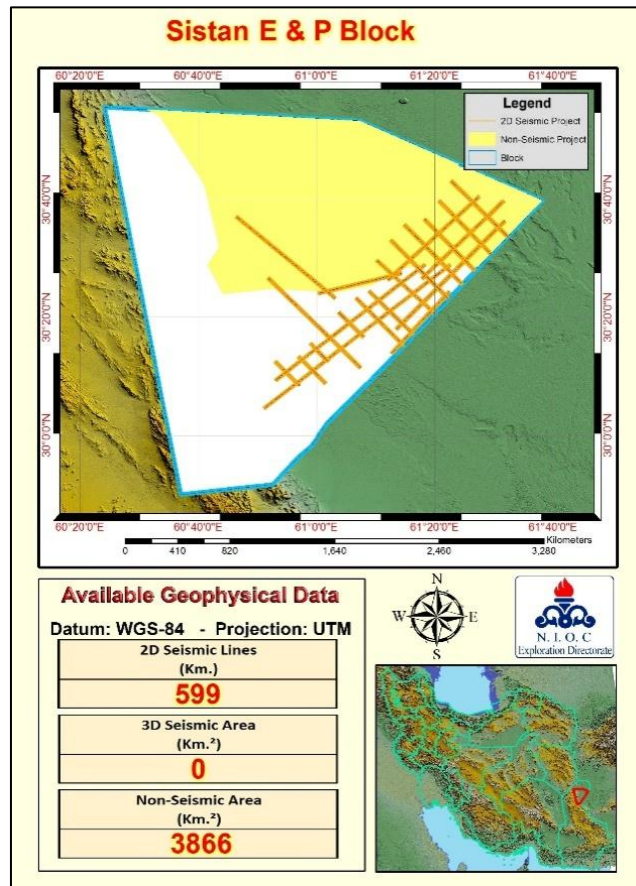
Frontier Basins

1-Taybad Block



Frontier Basins

1-Sistan Block



THAN YOU FOR YOUR
KIND ATTENTION

Varavi Anticline, Zagros/Fars

